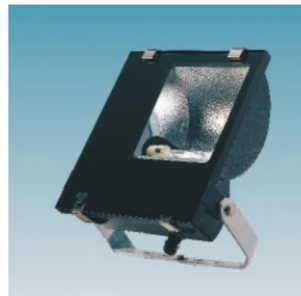
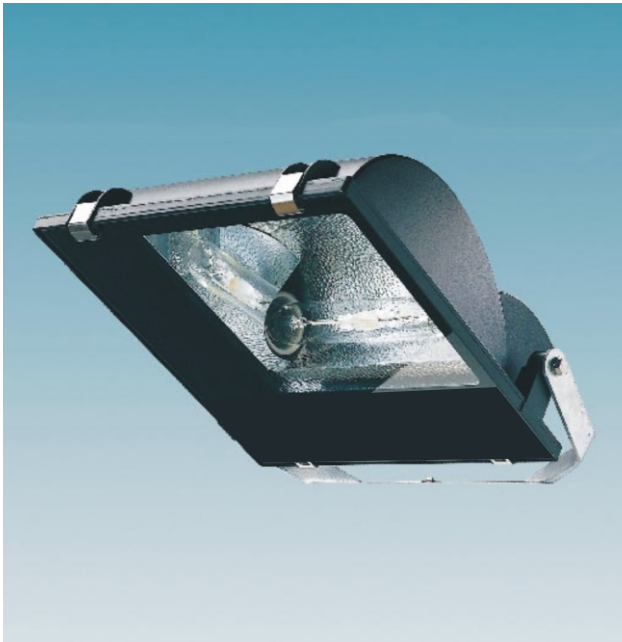


Floodlighting



NEPTUNE FLAT

Compact, sturdy general-purpose

Main applications

- Car parks
- Parks
- Architecture
- Sport facilities
- Industrial areas
- Security

Features

High-grade symmetrical or asymmetrical reflector projects a highly efficient light beam.

Wall, ceiling and surface mountings with wide ranges of adjustment offer versatile directionality for both down- and up-lighting.

Rugged, corrosion-resistant housing with integral gear box, supplied as Kombi-pack complete with lamp.

Compensated electrical control gear ensures constant performance.

Quick, easy access to lamp and gear, without affecting beam adjustment, through hinged front window with quick-release clips.

Heat-resistant silicone gasket

bonded to housing renders the luminaire dustproof and jetproof to IP 65.

Available with the following lamps: SON-T 250-400W; HPI-T 250-400W

Also suitable for indoor use

Materials and finish

Non-corrosive, high-pressure diecast aluminium housing with low copper content and high-grade black polyester finish; pre-anodized (2 micron) high-purity aluminium reflector (99.85%) with hammered rear surface and smooth side surfaces; 4 mm-thick toughened glass; silicone rubber seal; hot-dipped galvanized steel mounting bracket; all external fixings in stainless steel.

Installation and mounting

Universal mounting bracket allows ceiling, wall or surface mounting.

Cable entry via PG 13.5 cable gland. Front glass with quick-release hinge-clips for in-position lamp replacement.

Housing dustproof and jetproof to IP 65; no internal cleaning required.

Accessories

Stainless steel U-shaped bracket for mounting on 60-76 mm poles.



SYMMETRICAL

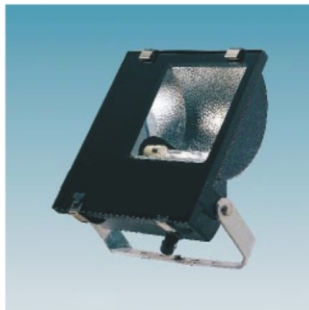
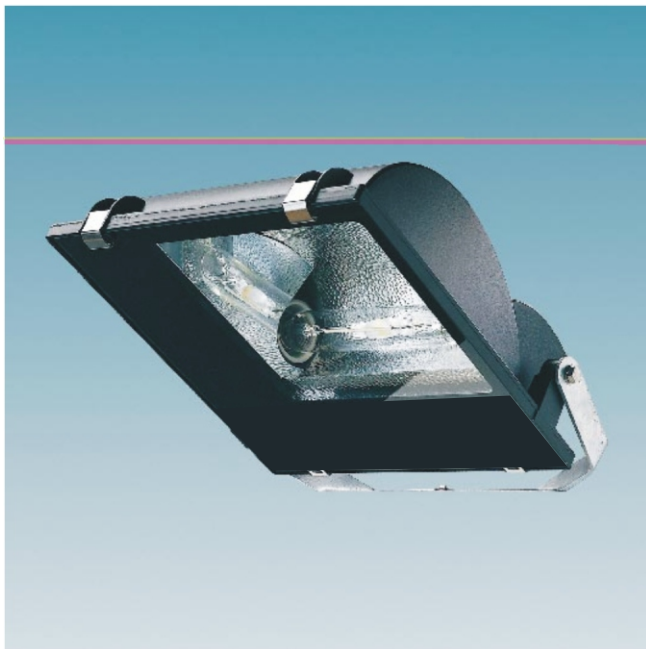
Product Code	Model	Capacitor	Lamp	Lamp Holder	Reflector	Protection	Housing Material	Fixing Hole	Dimension			
									A	B	C	D
220-230V/240V,50Hz												
DD0108	FYGT-L250A	18 MF	MH250W	E40	Symmetrical	IP65	Die. Alum	M10	450	155	448	120
DD0109	FYGT-L400A	36 MF	MH400W	E40	Symmetrical	IP65	Die. Alum	M10	450	155	448	120
DD0110	FYGT-L250AHS	30 MF	HPS250W	E40	Symmetrical	IP65	Die. Alum	M10	450	155	448	120
DD0111	FYGT-L400AHS	48 MF	HPS400W	E40	Symmetrical	IP65	Die. Alum	M10	450	155	448	120

ASYMMETRICAL

Product Code	Model	Capacitor	Lamp	Lamp Holder	Reflector	Protection	Housing Material	Fixing Hole	Dimension			
									A	B	C	D
220-230V/240V,50Hz												
DD0112	FYGT-L250A	18 MF	MH250W	E40	Asymmetrical	IP65	Die. Alum	M10	450	155	448	120
DD0113	FYGT-L400A	36 MF	MH400W	E40	Asymmetrical	IP65	Die. Alum	M10	450	155	448	120
DD0114	FYGT-L250AHS	30 MF	HPS250W	E40	Asymmetrical	IP65	Die. Alum	M10	450	155	448	120
DD0115	FYGT-L400AHS	48 MF	HPS400W	E40	Asymmetrical	IP65	Die. Alum	M10	450	155	448	120

Awarded the International Star Award
Geneva Switzerland 2002

Floodlighting



NEPTUNE FLAT

Compact, sturdy general-purpose

Main applications

- Car parks
- Parks
- Architecture
- Sport facilities
- Industrial areas
- Security

Features

- High-grade symmetrical or asymmetrical reflector projects a highly efficient light beam. Wall, ceiling and surface mountings with wide ranges of adjustment offer versatile directionality for both down- and up-lighting.
- Rugged, corrosion-resistant housing with integral gear box, supplied as Kombi-pack complete with lamp.
- Compensated electrical control gear ensures constant performance.
- Quick, easy access to lamp and gear, without affecting beam adjustment, through hinged front window with quick-release clips.

Heat-resistant silicone gasket

bonded to housing renders the luminaire dustproof and jetproof to IP 65.

Available with the following lamps: SON-T 250-400W; HPI-T 250-400W

Also suitable for indoor use

Materials and finish

Non-corrosive, high-pressure diecast aluminium housing with low copper content and high-grade black polyester finish; pre-anodized (2 micron) high-purity aluminium reflector (99.85%) with hammered rear surface and smooth side surfaces; 4 mm-thick toughened glass; silicone rubber seal; hot-dipped galvanized steel mounting bracket; all external fixings in stainless steel.

Installation and mounting

Universal mounting bracket allows ceiling, wall or surface mounting.

Cable entry via PG 13.5 cable gland. Front glass with quick-release hinge-clips for in-position lamp replacement.

Housing dustproof and jetproof to IP 65; no internal cleaning required.

Accessories

Stainless steel U-shaped bracket for mounting on 60-76 mm poles.



SYMMETRICAL

Product Code	Model	Capacitor	Lamp	Lamp Holder	Reflector	Protection	Housing Material	Fixing Hole	Dimension			
									A	B	C	D
220-230V/240V,50Hz												
DD0108	TJW-L250A	18 MF	MH250W	E40	Symmetrical	IP65	Die. Alum	M10	450	155	448	120
DD0109	TJW-L400A	36 MF	MH400W	E40	Symmetrical	IP65	Die. Alum	M10	450	155	448	120
DD0110	TJW-L250AHS	30 MF	HPS250W	E40	Symmetrical	IP65	Die. Alum	M10	450	155	448	120
DD0111	TJW-L400AHS	48 MF	HPS400W	E40	Symmetrical	IP65	Die. Alum	M10	450	155	448	120

ASYMMETRICAL

Product Code	Model	Capacitor	Lamp	Lamp Holder	Reflector	Protection	Housing Material	Fixing Hole	Dimension			
									A	B	C	D
220-230V/240V,50Hz												
DD0112	TJW-L250A	18 MF	MH250W	E40	Asymmetrical	IP65	Die. Alum	M10	450	155	448	120
DD0113	TJW-L400A	36 MF	MH400W	E40	Asymmetrical	IP65	Die. Alum	M10	450	155	448	120
DD0114	TJW-L250AHS	30 MF	HPS250W	E40	Asymmetrical	IP65	Die. Alum	M10	450	155	448	120
DD0115	TJW-L400AHS	48 MF	HPS400W	E40	Asymmetrical	IP65	Die. Alum	M10	450	155	448	120

Awarded the International Star Award
Geneva Switzerland 2002